

Prairie Heritage, Inc. and Geary County Juneteenth present:

Succeeding Generations:

AFRICAN-AMERICAN AGRICULTURE IN KANSAS



Nicodemus, Kansas

Presentation by
Anne Hawkins

Kansas Humanities
Council Speakers Bureau

Washburn University
Department of History

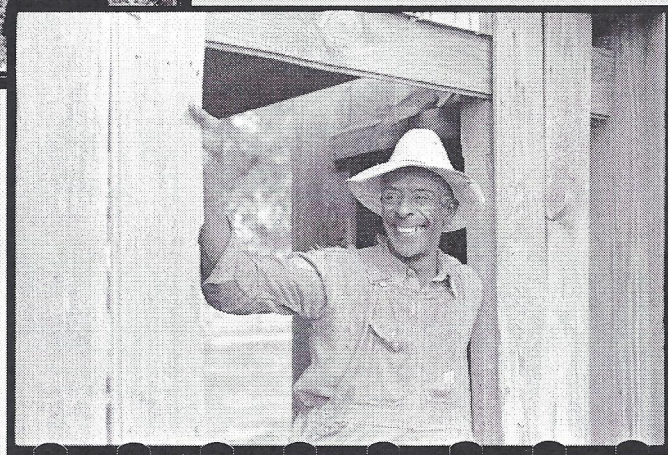
Followed by lively discussion!

**MONDAY,
JANUARY 27, 2014,
7 PM**

**Dorothy Bramlage Public Library
320 W. 7th St.
Junction City, Kansas**

Refreshments will be served.

**This program is part of the Kansas Humanities Council's "The Way We Worked" Speakers Bureau.
It is made possible by a grant from the Kansas Humanities Council.**



Jefferson County, Kansas. John Vachon, photographer



For more information, contact:

Deliliah Hamilton, 785.226.2750, deliliahdansby@yahoo.com

Margy Stewart, 785.539.5592, zzstew@flinthills.com

Prairie Heritage, Inc. www.prairieheritage.org

Prairie Heritage, Inc. and Geary County Juneteenth present:

Succeeding Generations: AFRICAN-AMERICAN AGRICULTURE IN KANSAS



Presentation by
Anne Hawkins

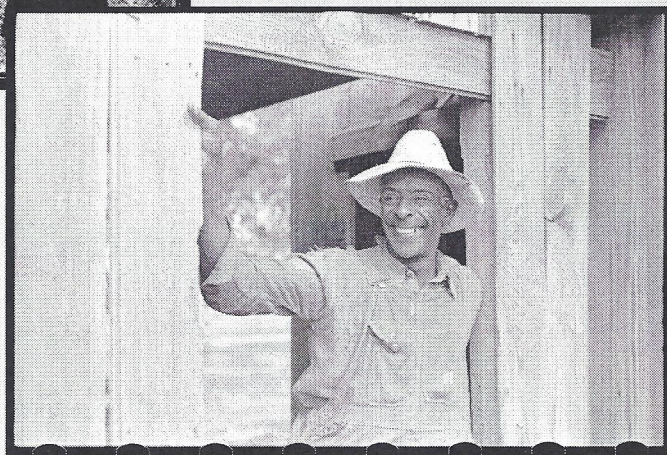
Kansas Humanities
Council Speakers Bureau

Washburn University
Department of History

Followed by lively discussion!

**MONDAY,
JANUARY 27, 2014,
7 PM**

**Dorothy Bramlage Public Library
320 W. 7th St.
Junction City, Kansas**



Jefferson County, Kansas. John Vachon, photographer

Refreshments will be served.

This program is part of the Kansas Humanities Council's "The Way We Worked" Speakers Bureau. It is made possible by a grant from the Kansas Humanities Council.



For more information, contact:

Delilah Hamilton, 785.226.2750, delilahdansby@yahoo.com

Margy Stewart, 785.539.5592, zzstew@flinthills.com

Prairie Heritage, Inc. www.prairieheritage.org